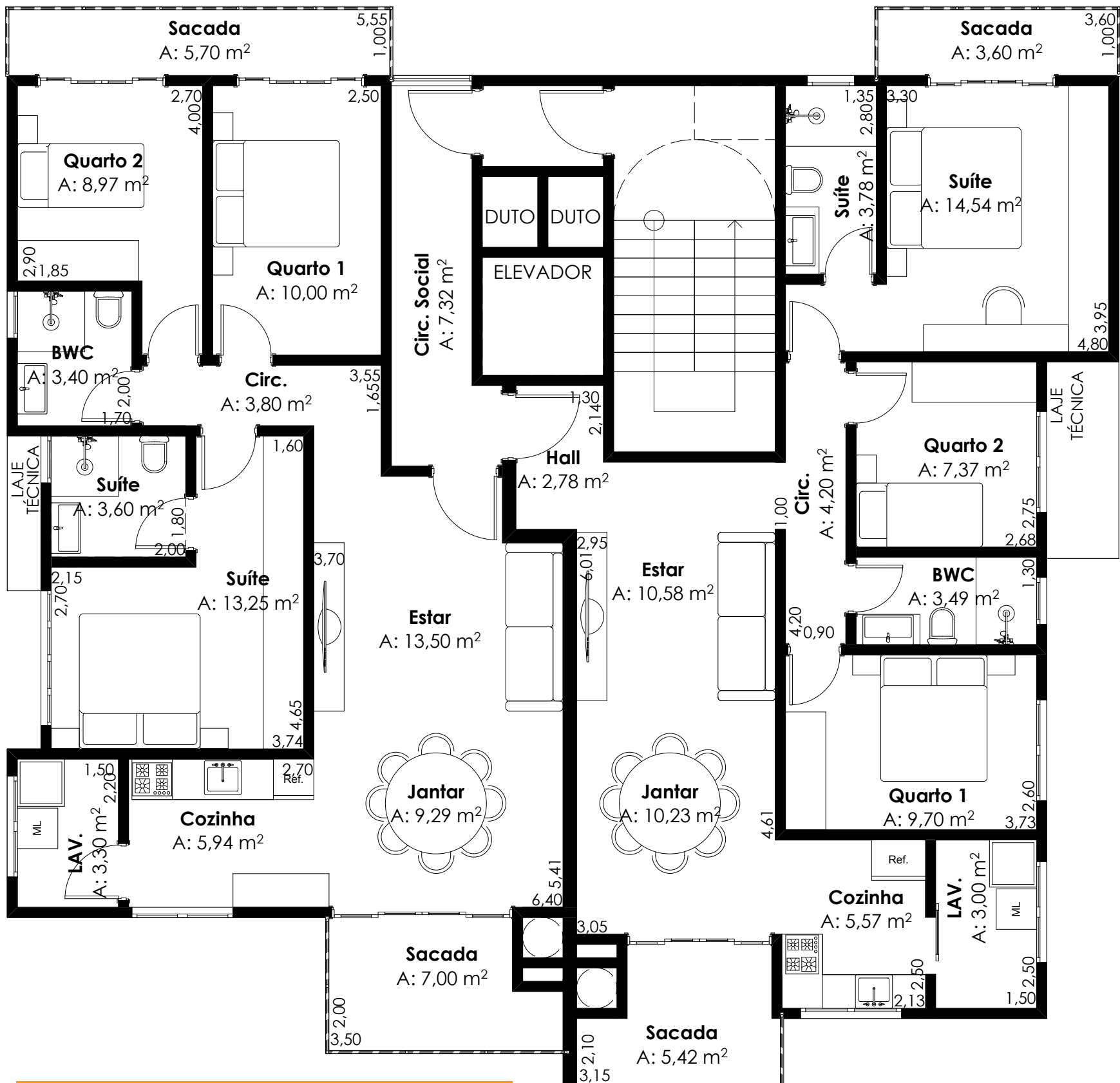


**TIPO 2**

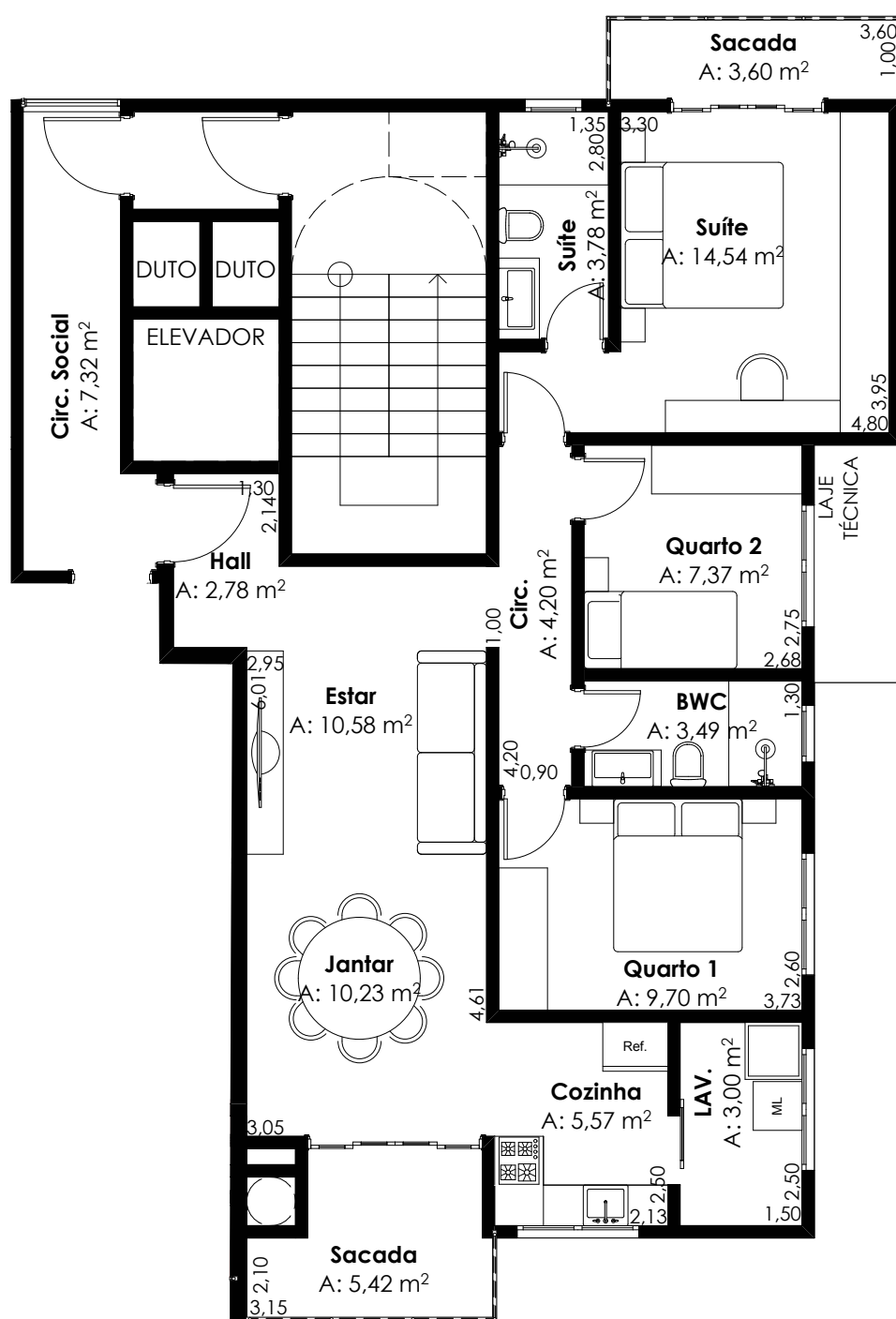
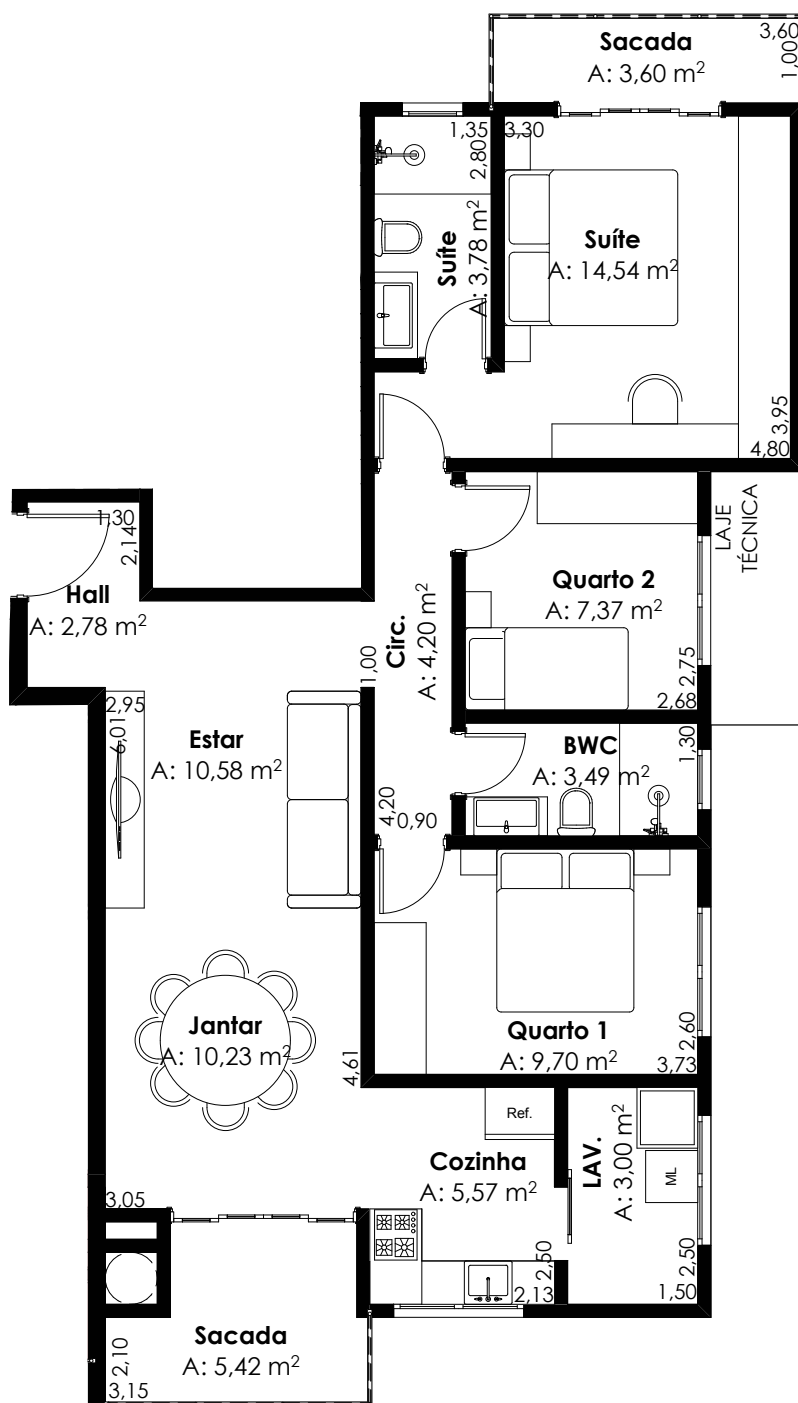
**TIPO 1**





- Apartamentos com **uma suíte, 2 quartos** e área social voltada para o lago.
- Área privativa **Ap 01 (95,37m²)**
- Área privativa **Ap 02 (96,61m²)**
- Todos os apartamentos incluem **01 vaga de garagem.**

**TIPO 1**



**TIPO 2**
